



Areas	Siding	Other
Facades	0 ft ²	2265 ft ²
Openings	0 ft ²	208 ft ²
Unknown (no photos)	-	0 ft ²
Total	0 ft ²	2473 ft ²

Openings	Siding	Other
Quantity	0	6
Tops Length	-	34' 1"
Sills Length	-	10' 3"
Sides Length	-	70' 5"
Total Perimeter	-	114' 9"

Siding Waste Factor	Area	Squares
Zero Waste	0 ft ²	0¼
+10%	0 ft ²	0¼
+18%	0 ft ²	0¼
With Openings*	0 ft ²	0¼
Openings* +10%	0 ft ²	0¼
Openings* +18%	0 ft ²	0¼

*Openings measurements exclude any individual openings greater than 33 ft² (e.g. patio doors, garage doors).

Trim	Siding	Other
Level Starter	-	437' 5"
Sloped Trim	-	35' 9"
Vertical Trim	-	941' 5"

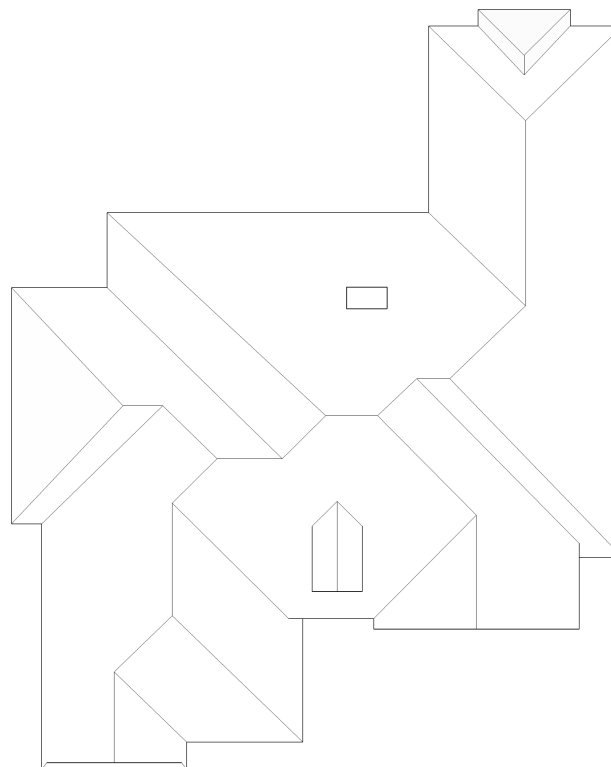
Roofline	Length	Avg. Depth	Soffit Area
Eaves Fascia (Gutters)	297' 4"	-	-
Level Frieze Board	298' 10"	1' 3"	583 ft ²
Rakes Fascia	55' 10"	-	-
Sloped Frieze Board	40' 9"	11"	46 ft ²

Corners	Siding	Other
Inside Qty	0	-
Inside Length	-	-
Outside Qty	0	-
Outside Length	-	-

Accessories	Siding	Other
Shutter Qty	0	0
Shutter Area	0 ft ²	0 ft ²
Vents Qty	0	0
Vents Area	0 ft ²	0 ft ²

Roof	Area	Total	Length
Roof facets	4489 ft ²	24	-
Ridges / Hips	-	28	334' 1"
Valleys	-	11	169' 5"
Rakes	-	8	55' 10"
Gutters / Eaves	-	29	297' 4"
Flashing	-	6	27' 7"
Step Flashing	-	6	21' 9"

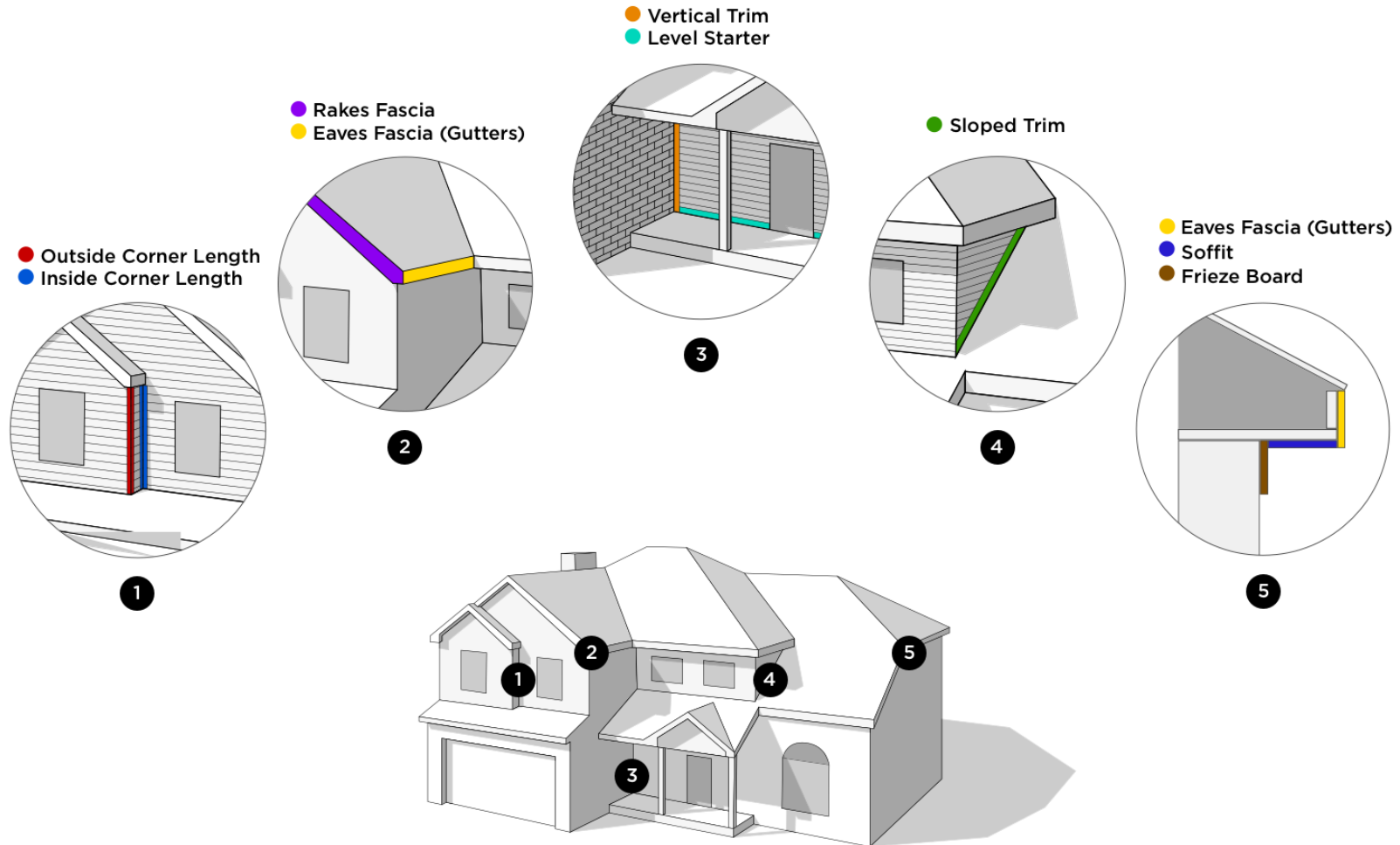
Roof Pitch	Area	Percentage
10/12	4397 ft ²	97.94%
11/12	56 ft ²	1.25%
7/12	28 ft ²	0.62%
13/12	8 ft ²	0.18%

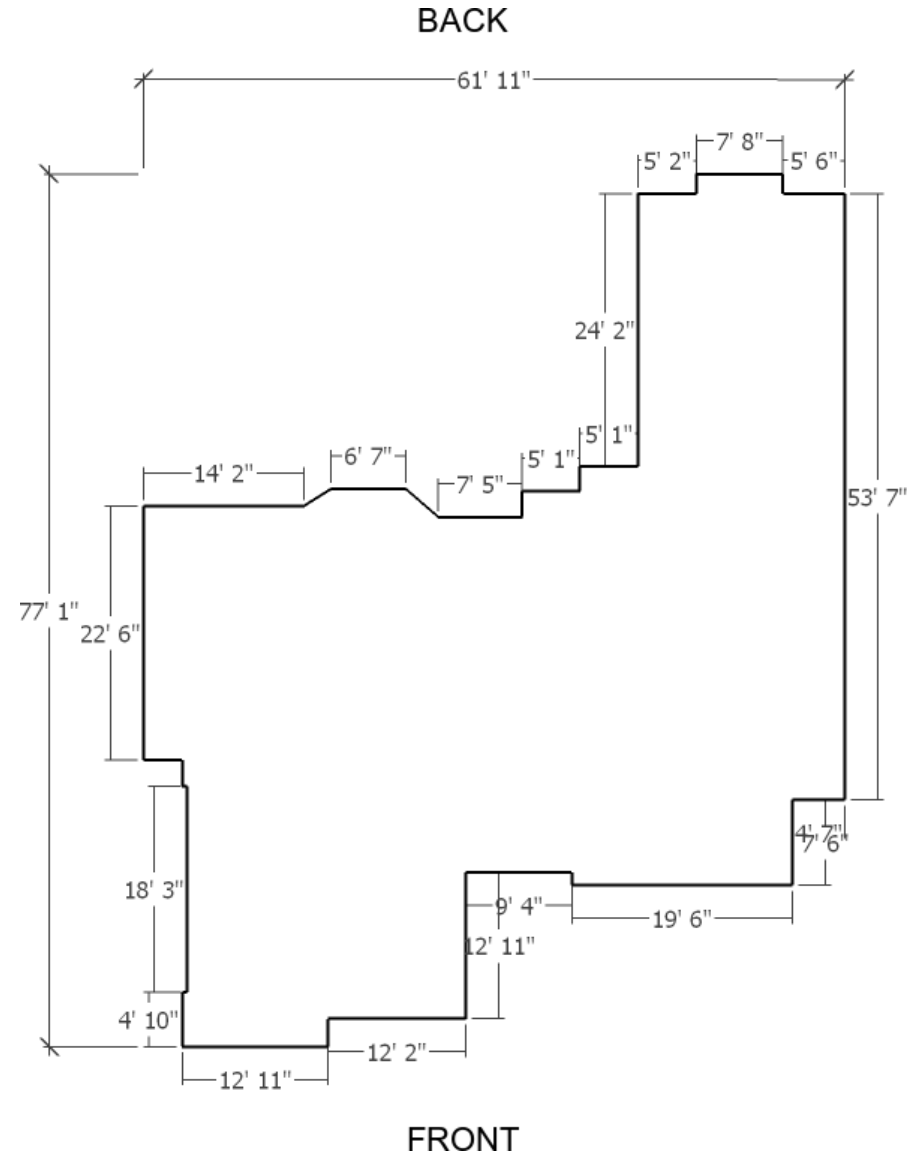
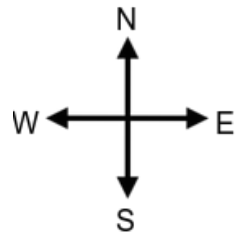


Waste Factor Calculation

	Zero Waste	+5%	+10%	+15%	+20%
Area	4489 ft ²	4713 ft ²	4938 ft ²	5162 ft ²	5387 ft ²
Squares	45	47⅓	49⅔	51⅓	54

The table above provides the total roof area of a given property using waste percentages as noted. Please consider that area values and specific waste factors can be influenced by the size and complexity of the property, captured image quality, specific roofing techniques, and your own level of expertise. Ridge, hip, valley, and starter lengths are not included and may require additional material.

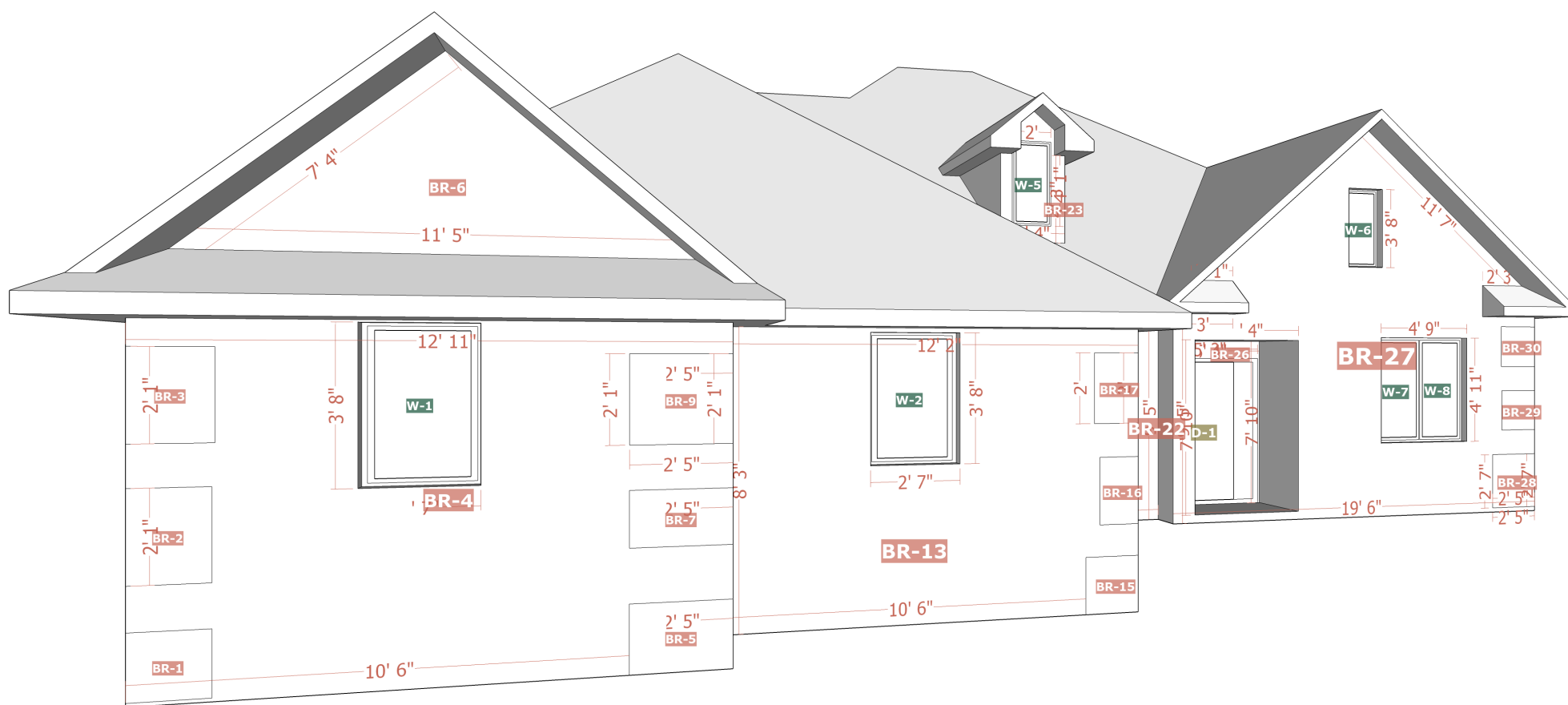
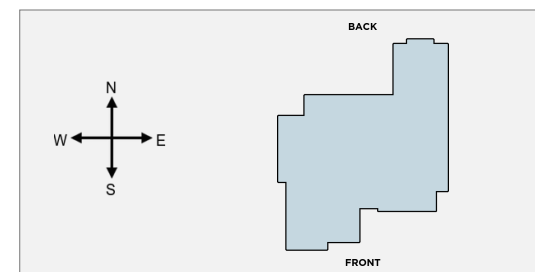


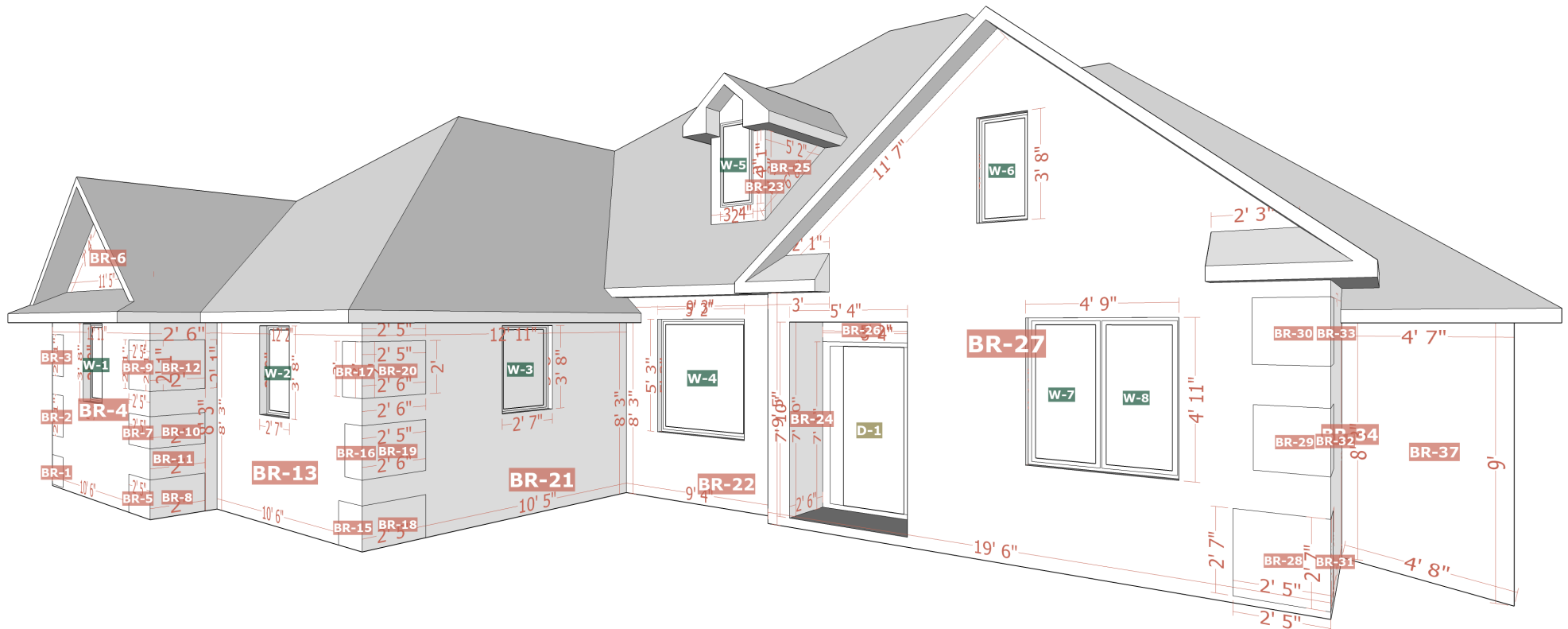
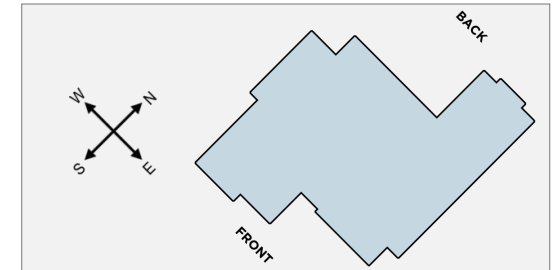


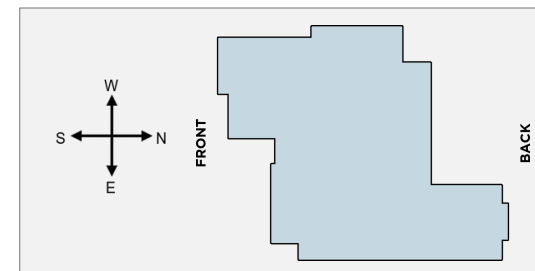
Number of Stories: 1

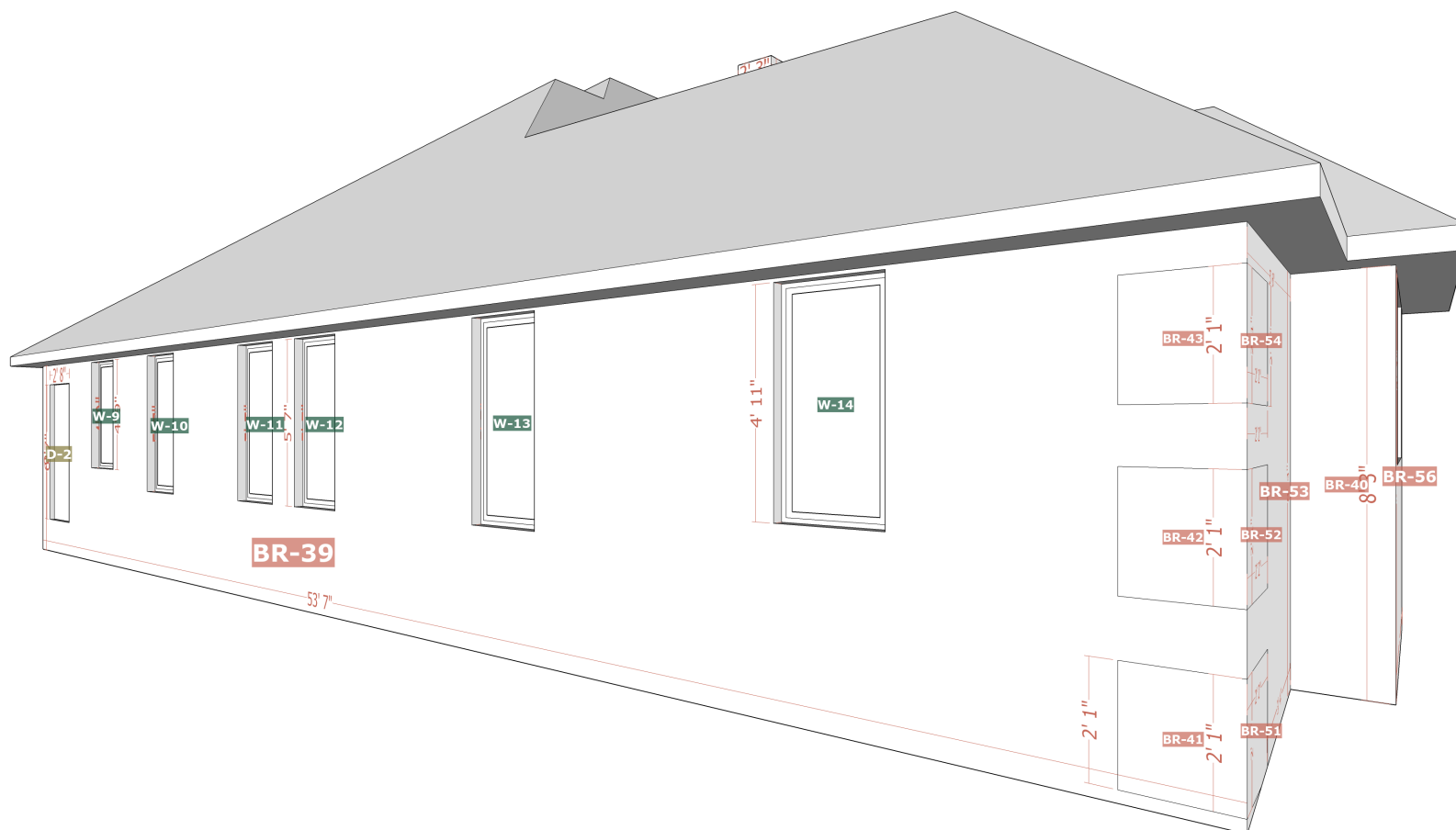
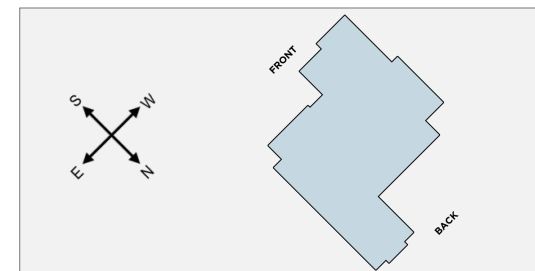
Footprint Perimeter: 283' 6"

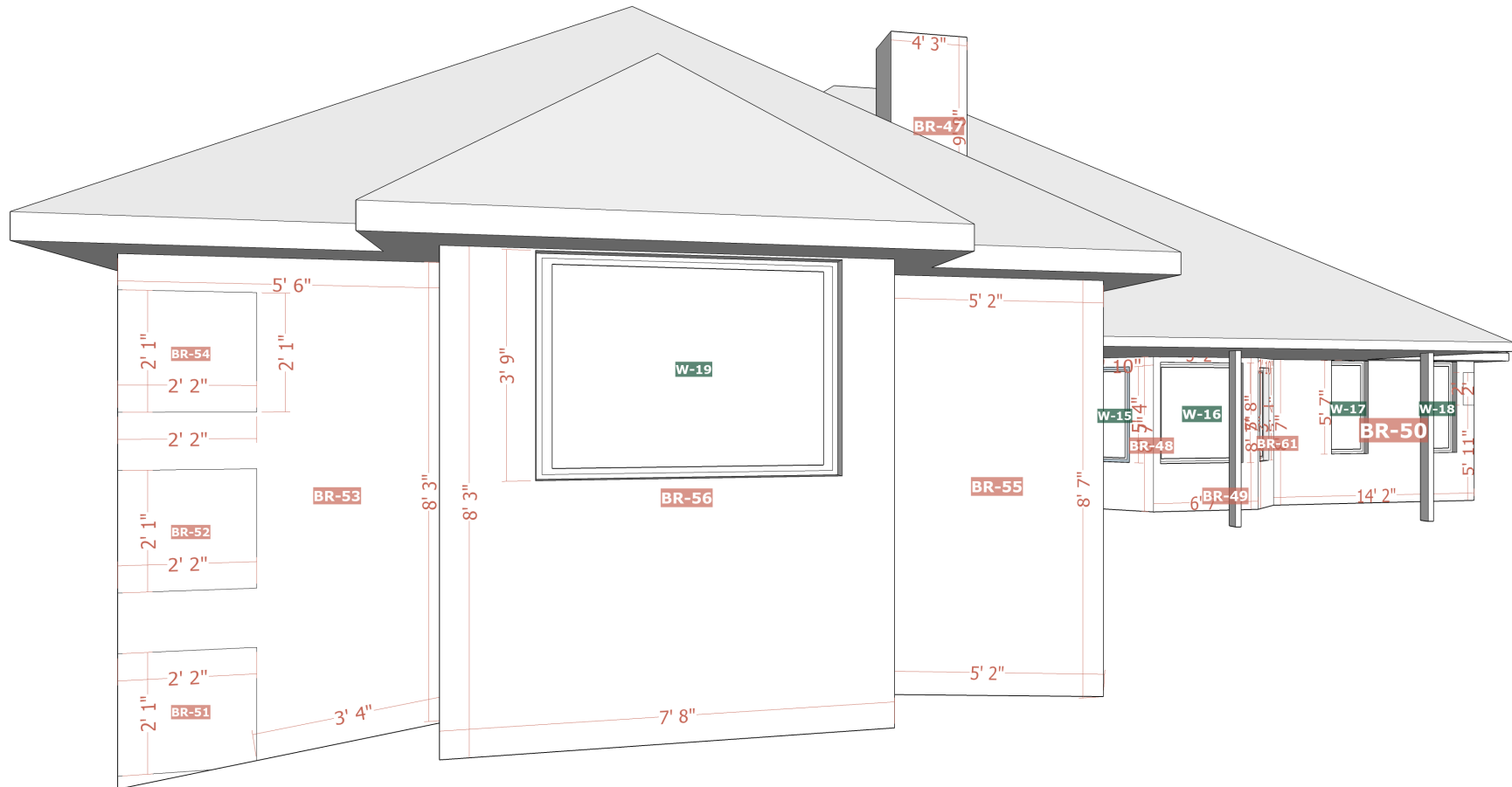
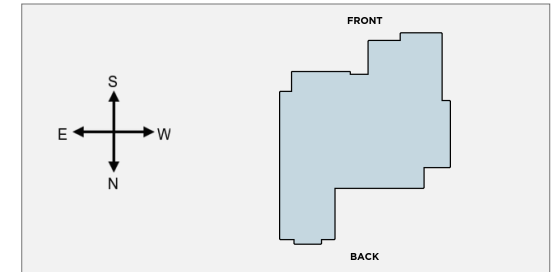
Footprint Area: 2859 ft²

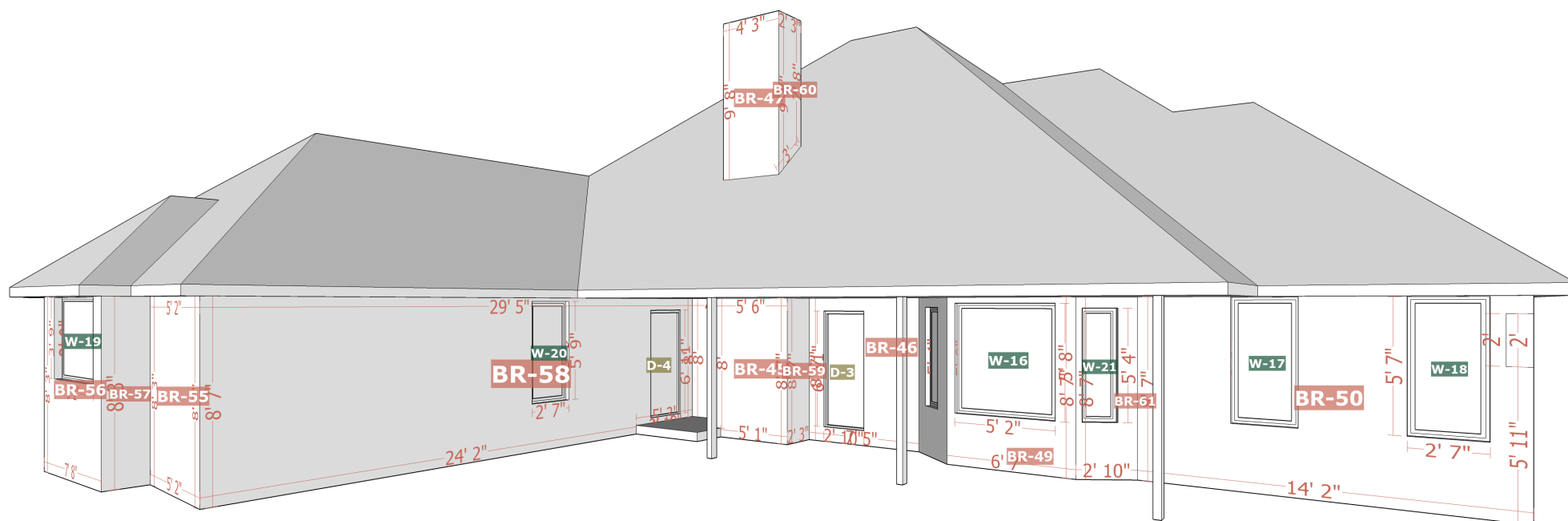
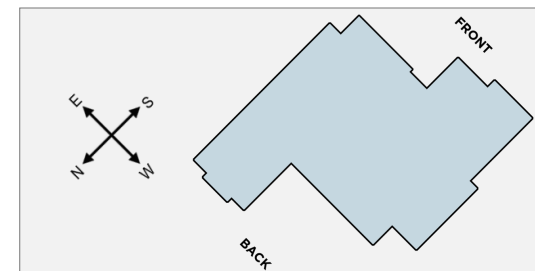


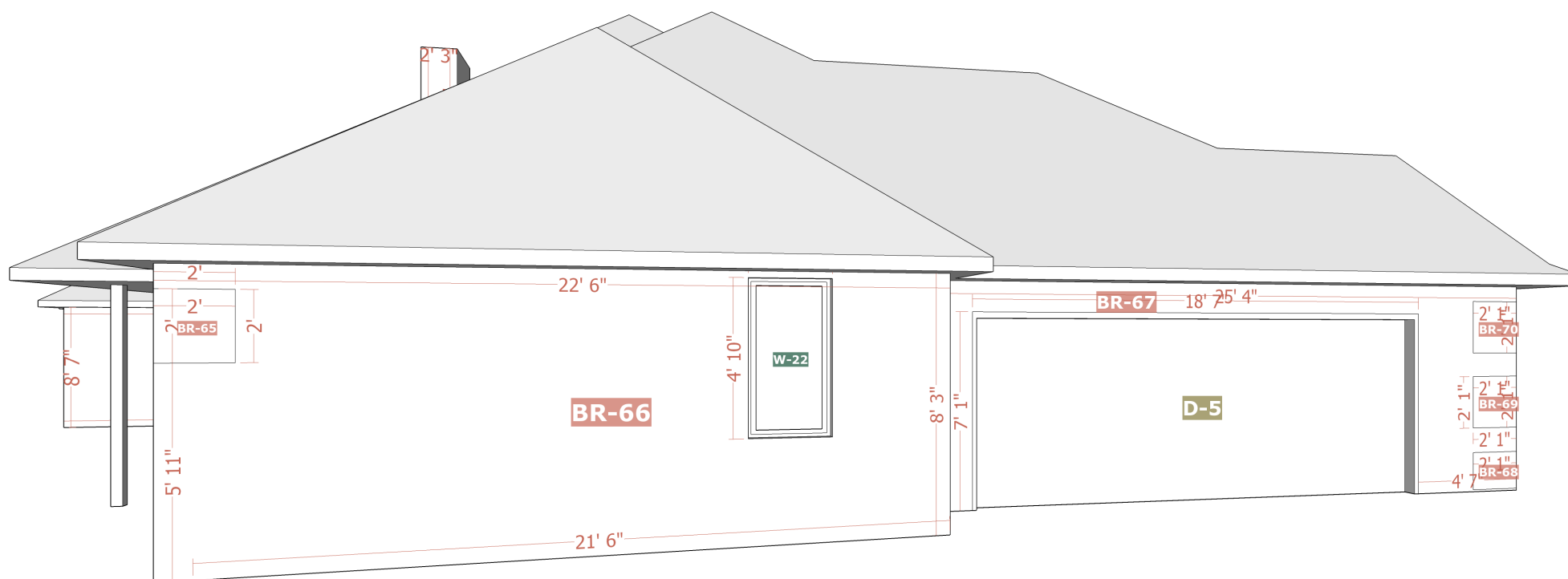
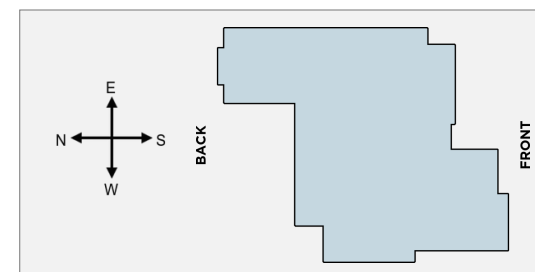


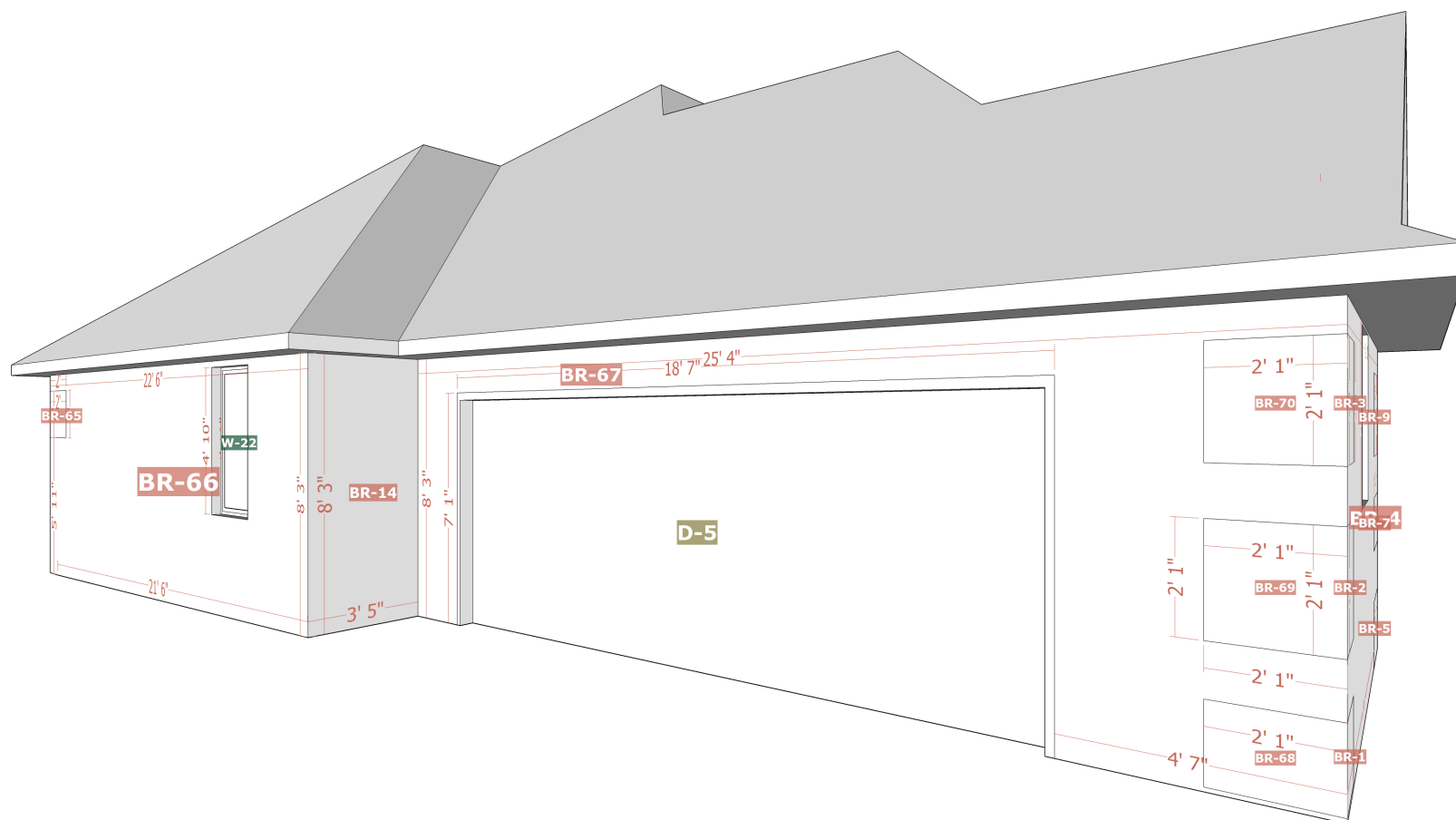
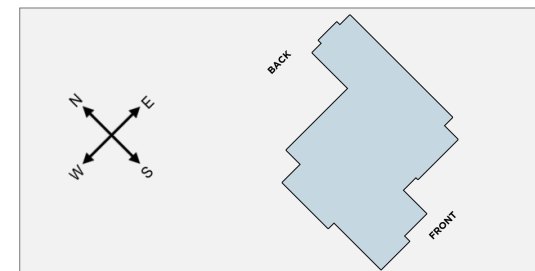












Brick

Facade	Area	Openings	Shutters	Vents
BR-1	2 ft ²	0	0	0
BR-2	3 ft ²	0	0	0
BR-3	4 ft ²	0	0	0
BR-4	75 ft ²	0	0	0
BR-5	4 ft ²	0	0	0
BR-6	27 ft ²	0	0	0
BR-7	3 ft ²	0	0	0
BR-8	3 ft ²	0	0	0
BR-9	5 ft ²	0	0	0
BR-10	3 ft ²	0	0	0
BR-11	10 ft ²	0	0	0
BR-12	4 ft ²	0	0	0
BR-13	82 ft ²	0	0	0
BR-14	28 ft ²	0	0	0
BR-15	3 ft ²	0	0	0
BR-16	2 ft ²	0	0	0

Brick

Facade	Area	Openings	Shutters	Vents
BR-17	3 ft ²	0	0	0
BR-18	4 ft ²	0	0	0
BR-19	5 ft ²	0	0	0
BR-20	5 ft ²	0	0	0
BR-21	83 ft ²	0	0	0
BR-22	60 ft ²	0	0	0
BR-23	10 ft ²	1	0	0
BR-24	19 ft ²	0	0	0
BR-25	11 ft ²	0	0	0
BR-26	5 ft ²	1	0	0
BR-27	184 ft ²	0	0	0
BR-28	6 ft ²	0	0	0
BR-29	4 ft ²	0	0	0
BR-30	4 ft ²	0	0	0
BR-31	4 ft ²	0	0	0
BR-32	3 ft ²	0	0	0

Brick

Facade	Area	Openings	Shutters	Vents
BR-33	3 ft ²	0	0	0
BR-34	60 ft ²	0	0	0
BR-35	25 ft ²	0	0	0
BR-36	32 ft ²	0	0	0
BR-37	40 ft ²	0	0	0
BR-38	20 ft ²	0	0	0
BR-39	372 ft ²	1	0	0
BR-40	14 ft ²	0	0	0
BR-41	4 ft ²	0	0	0
BR-42	4 ft ²	0	0	0
BR-43	4 ft ²	0	0	0
BR-44	38 ft ²	0	0	0
BR-45	47 ft ²	0	0	0
BR-46	44 ft ²	1	0	0
BR-47	41 ft ²	0	0	0
BR-48	24 ft ²	0	0	0

Brick

Facade	Area	Openings	Shutters	Vents
BR-49	27 ft ²	0	0	0
BR-50	91 ft ²	0	0	0
BR-51	4 ft ²	0	0	0
BR-52	4 ft ²	0	0	0
BR-53	34 ft ²	0	0	0
BR-54	4 ft ²	0	0	0
BR-55	43 ft ²	0	0	0
BR-56	43 ft ²	0	0	0
BR-57	14 ft ²	0	0	0
BR-58	215 ft ²	1	0	0
BR-59	19 ft ²	0	0	0
BR-60	20 ft ²	0	0	0
BR-61	16 ft ²	0	0	0
BR-62	19 ft ²	0	0	0
BR-63	11 ft ²	0	0	0
BR-64	10 ft ²	0	0	0

Brick

Facade	Area	Openings	Shutters	Vents
BR-65	4 ft ²	0	0	0
BR-66	172 ft ²	0	0	0
BR-67	64 ft ²	1	0	0
BR-68	3 ft ²	0	0	0
BR-69	4 ft ²	0	0	0
BR-70	4 ft ²	0	0	0
Total	2265 ft ²	6	0	0

Windows

Opening	Width x Height	United Inches	Area
W-1	30" x 45"	75"	9 ft ²
W-2	30" x 45"	75"	9 ft ²
W-3	30" x 45"	75"	9 ft ²
W-4	61" x 64"	125"	27 ft ²
W-5	24" x 49"	73"	8 ft ²
W-6	22" x 45"	67"	7 ft ²
W-7	30" x 63"	93"	13 ft ²
W-8	30" x 63"	93"	13 ft ²
W-9	30" x 63"	93"	13 ft ²
W-10	30" x 63"	93"	13 ft ²
W-11	30" x 63"	93"	13 ft ²
W-12	30" x 63"	93"	13 ft ²
W-13	30" x 63"	93"	13 ft ²
W-14	30" x 63"	93"	13 ft ²
W-15	19" x 64"	83"	8 ft ²
W-16	61" x 64"	125"	27 ft ²
W-17	30" x 63"	93"	13 ft ²

Doors

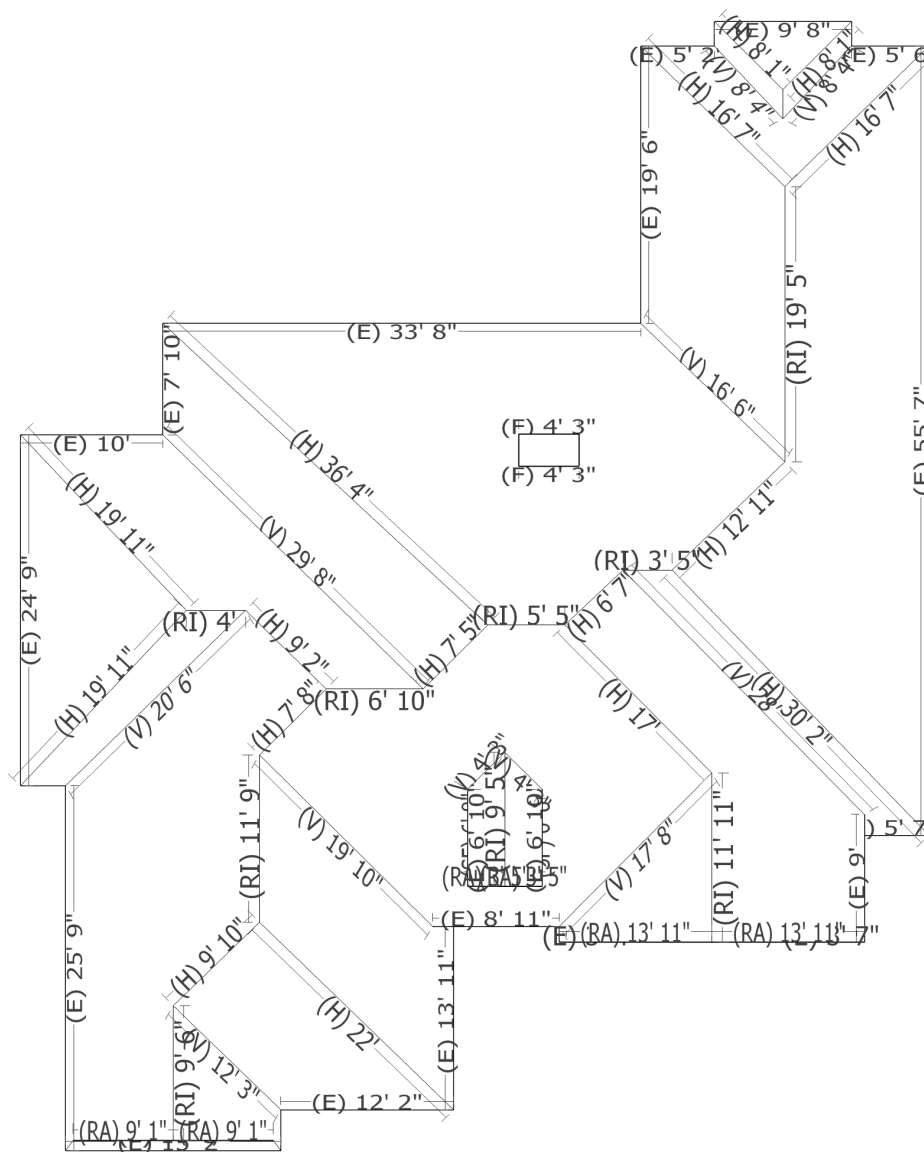
Opening	Width x Height	Area
D-1	36" x 80"	20 ft ²
D-2	32" x 80"	18 ft ²
D-3	32" x 80"	18 ft ²
D-4	32" x 80"	18 ft ²
D-5	216" x 84"	126 ft ²
Total	-	200 ft ²

Windows (cont.)

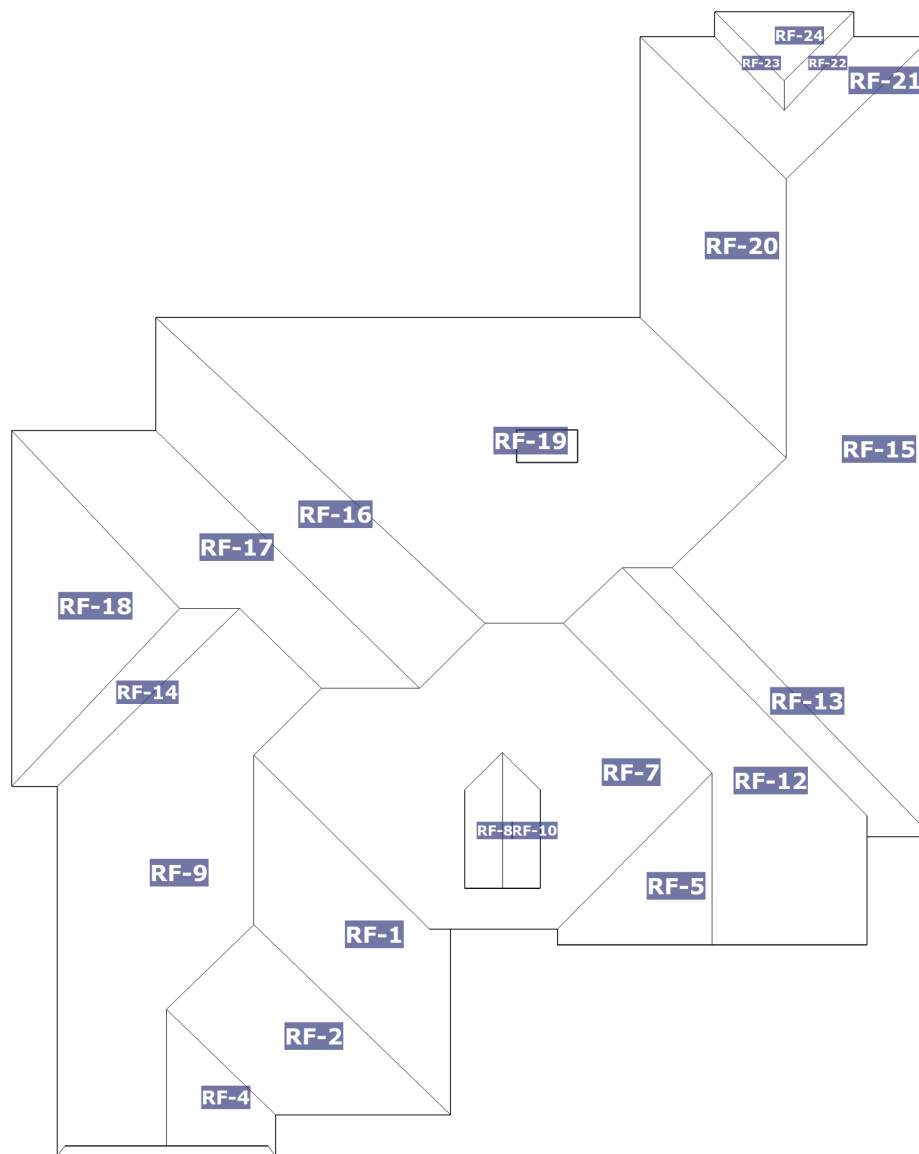
Opening	Width x Height	United Inches	Area
W-18	30" x 63"	93"	13 ft ²
W-19	61" x 46"	107"	19 ft ²
W-20	30" x 63"	93"	13 ft ²
W-21	19" x 64"	83"	8 ft ²
W-22	30" x 63"	93"	13 ft ²
Total	-	2004"	287 ft ²

Roof	Length
Ridges (RI)	84'
Hips (H)	250' 1"
Valleys (V)	169' 5"
Rakes (RA)	55' 10"
Gutters / Eaves (E)	297' 4"
Flashing (F)*	27' 7"
Step Flashing (SF)*	21' 9"

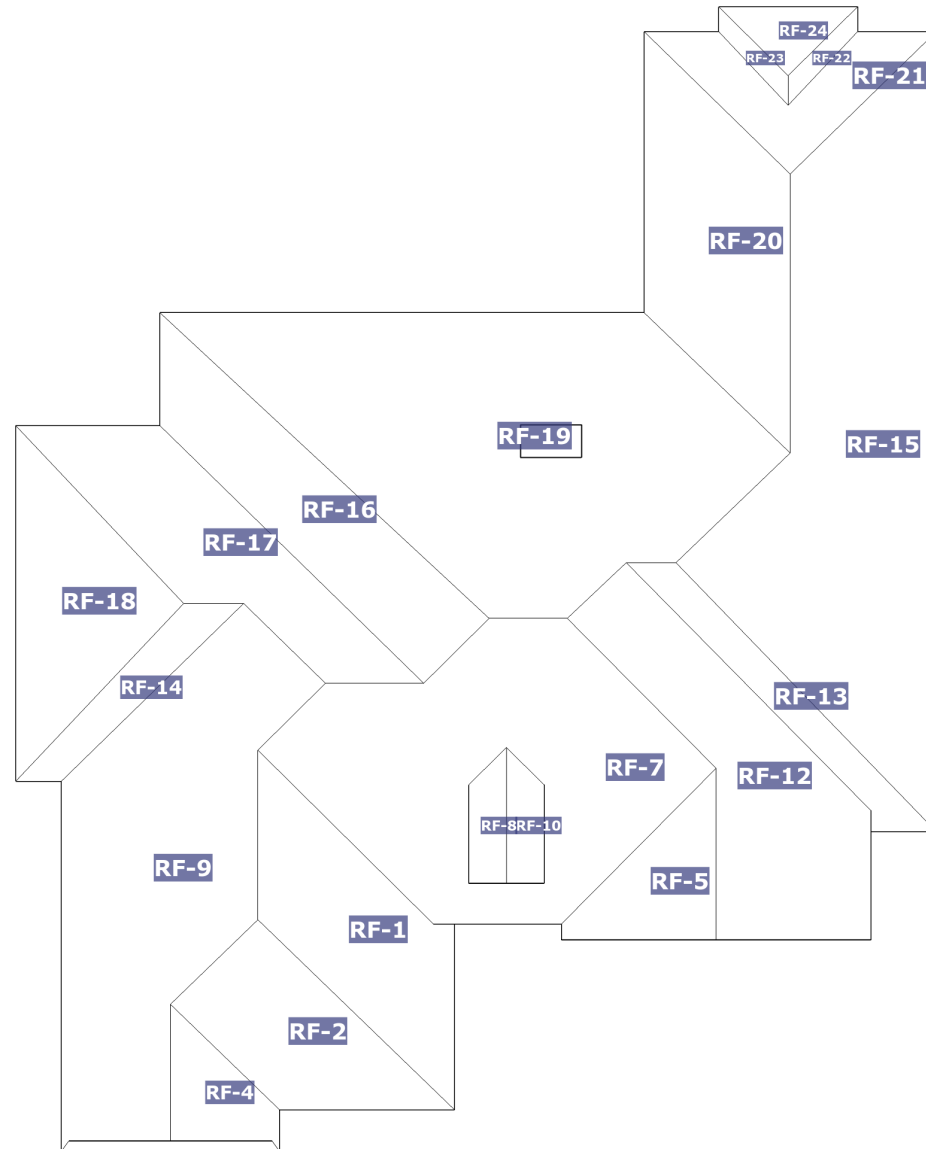
*Flashing and Step Flashing information are better accessible on the 3D reconstruction for this job



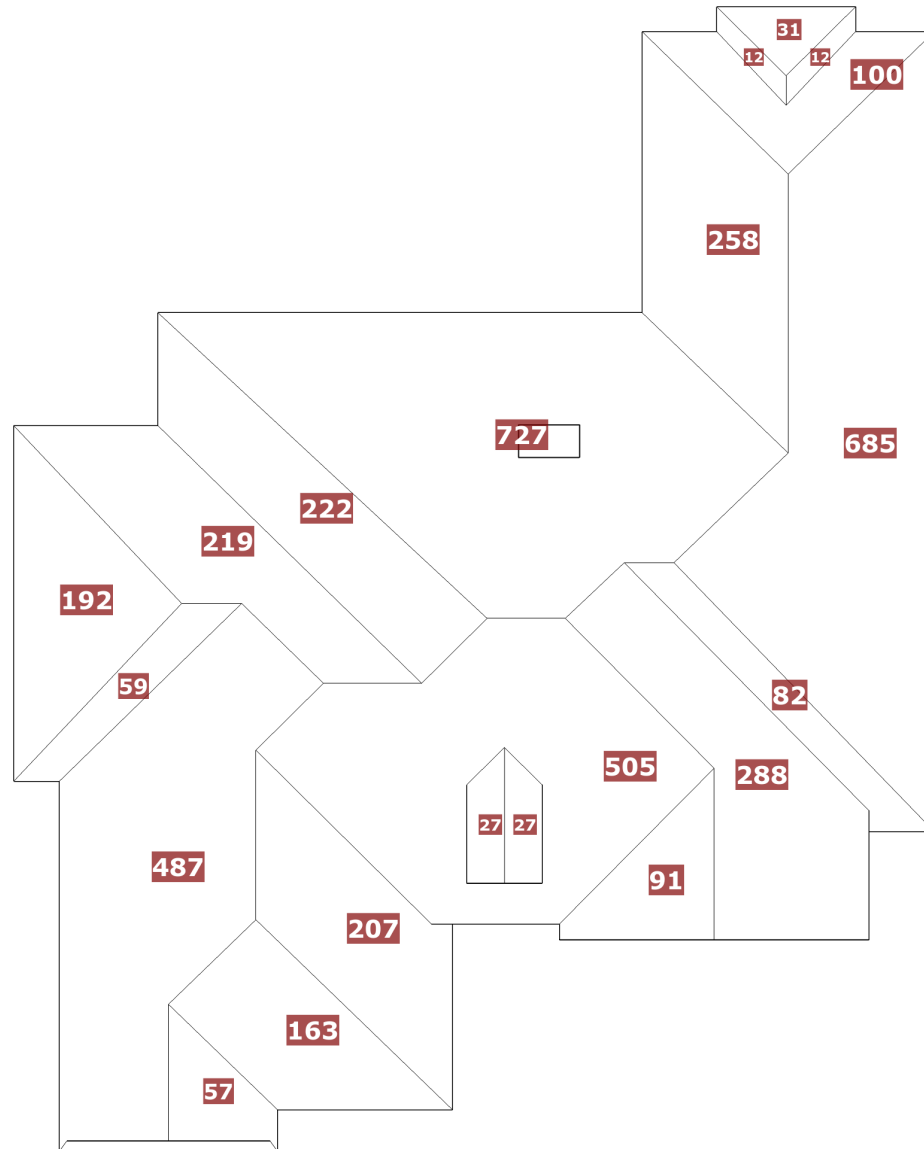
Facet	Area	Pitch
RF-1	207 ft ²	10/12
RF-2	163 ft ²	10/12
RF-3	28 ft ²	7/12
RF-4	57 ft ²	10/12
RF-5	91 ft ²	10/12
RF-6	4 ft ²	13/12
RF-7	505 ft ²	10/12
RF-8	27 ft ²	10/12
RF-9	487 ft ²	10/12
RF-10	27 ft ²	10/12
RF-11	4 ft ²	13/12
RF-12	288 ft ²	10/12



Facet	Area	Pitch
RF-13	82 ft ²	10/12
RF-14	59 ft ²	10/12
RF-15	685 ft ²	10/12
RF-16	222 ft ²	10/12
RF-17	219 ft ²	10/12
RF-18	192 ft ²	10/12
RF-19	727 ft ²	10/12
RF-20	258 ft ²	10/12
RF-21	100 ft ²	10/12
RF-22	12 ft ²	11/12
RF-23	12 ft ²	11/12
RF-24	31 ft ²	11/12



Roof	Facets	Total
Roof Facets	24	4489 ft ²



Roof Pitch	Area	Percentage
10/12	4397 ft ²	97.94%
11/12	56 ft ²	1.25%
7/12	28 ft ²	0.62%
13/12	8 ft ²	0.18%

